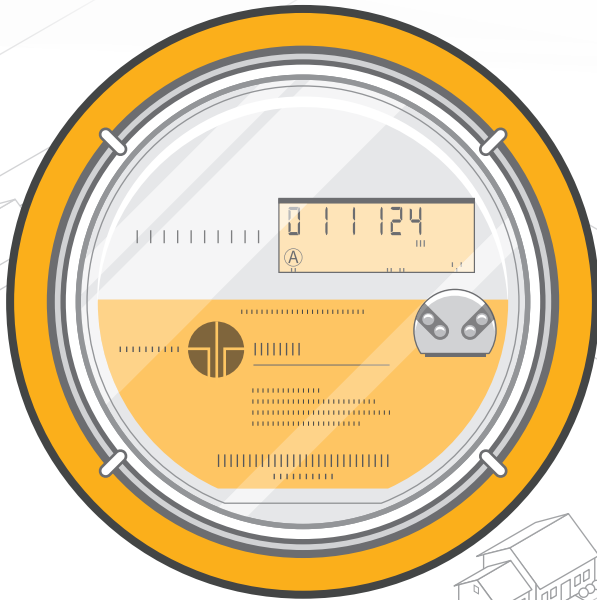


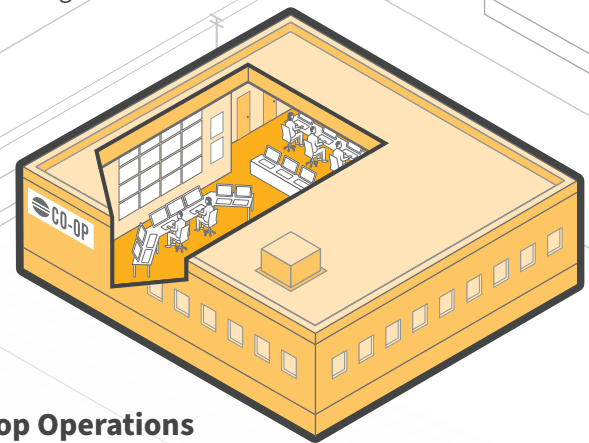
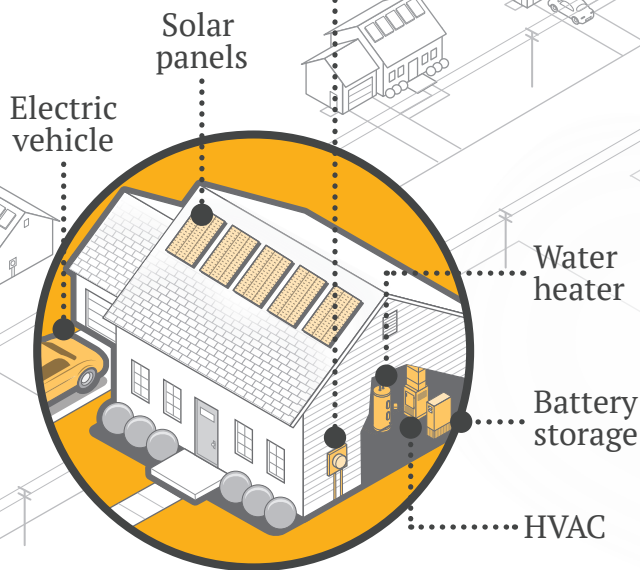
# AMI 2.0

Advanced metering infrastructure or AMI has been the state of the art for utilities for the past 20 years, and electric cooperatives have been among its earliest and most aggressive adopters. Now, as those first-generation meters begin to age out, highly advanced AMI 2.0 systems are set to revolutionize the industry, with new edge-computing and data collection and analysis capabilities that promise to enable multiple new applications and improve the reliability and flexibility of the grid. Here are some of the benefits of AMI 2.0.



## Meter Features

- Faster, more accurate readings.
- More frequent transmissions.
- Enable greater control of energy-producing and consuming devices.
- Sample voltage and amperages on demand.
- Independently detect anomalous conditions.
- Applications pushed to meters to meet new needs.
- Faster processor.
- Increased memory.
- Longer-lasting batteries.



## Co-op Operations

- Better data acquisition and analytics.
- Improved member engagement.
- Integration and tracking of DERs.
- Design innovative energy programs.
- Evaluate, measure and verify cost/energy savings.
- Improved power quality and resilience.
- Quicker outage restoration.
- AMI network self-healing capabilities.
- Load disaggregation programs.
- Virtual power plants.

## Member Benefits

- Better integration of distributed energy resources.
- Ability to combine a standard meter and a net meter into a single unit.
- Improved customer awareness of consumption, pricing.
- Real-time home energy management, load control and outage/usage alerts.