

Option 1. Purchase the monthly output per panel with a one-year commitment

This option is an affordable and easy way for members who want to participate in solar to do so. Members commit to paying the solar energy rate for the output of 1-5 panels for at least a one-year commitment. After one year, they can either continue month-to-month or cancel. Each panel is expected to produce 525 kWh per year per panel.

Option 2. Long-term 25 year lease to lock in solar energy rate.

This option is a long-term guaranteed solar energy rate, regardless of what electric rates do over the course of the lease agreement. Participating members are protected against inflation, realizing increased savings as energy prices rise. Members can lease the per panel output of 1-5 panels with a 25 year commitment. The up-front per panel lease cost of \$815 covers the fixed costs of the panel and the solar energy output is at no cost for the life of the lease. General distribution rate and solar maintenance rate will apply and may be revised from time to time based upon current cost of service studies.

Community Solar Basics

- Available to all Platte-Clay Electric members on a first-come, first-served basis
- Nothing on your home or office building
- Flexible sizing to fit any budget
- Comprehensive Operations and Maintenance included
- Optimally situated and fully maintained solar arrays for maximum power generation
- REC credits assigned to the participating member
- If you move locally, your solar energy moves with you
- If you move from the area, you can sell your panels back to PCEC
- Internet and smartphone monitoring to easily track performance
- Two different options for level of participation



Renewable Energy Credits are the environmental attributes associated with your solar purchase. Each panel offsets approximately 1/2 ton of CO2 emissions per year.



With Platte-Clay's community solar project, any resident or small business can take advantage of solar power, even renters. Members can participate in solar energy and reduce their carbon footprint - if they want to - without making any changes to their property. The system will offset 182 tons of CO2 emissions per year.





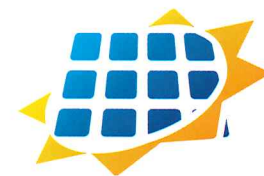
Platte-Clay's community owned solar array is a new idea in cooperative renewable energy - a locally produced solar solution built right here in your community. In fact, Platte-Clay is the first cooperative in the state of Missouri to construct and offer a community solar array. Now, as a Platte-Clay Electric member, you can lease fully maintained solar panels in PCEC's community solar farm. Without changing your property, you can utilize local clean energy that's easy, accessible, and affordable. Space is limited, so act fast and reserve your panel before they are all gone.

www.pcec.coop
816-628-3121

Platte-Clay Electric Cooperative

PO Box 100
1000 West 92 Hwy
Kearney, MO 64060

www.pcec.coop
816-628-3121



SOLARTECH™
Platte-Clay Electric Cooperative



Renewable energy,
locally produced, for
members who want it

www.pcec.coop
816-628-3121