



# VOLUNTARY AND OPEN MEMBERSHIP

Membership in a cooperative is open to all people who can reasonably use its services and stand willing to accept the responsibilities of membership, regardless of race, religion, gender or economic circumstances.

# 2



## DEMOCRATIC MEMBER CONTROL

Cooperatives are democratic organizations controlled by their members, who actively participate in setting policies and making decisions. Representatives (directors/trustees) are elected among members and are accountable to them. In primary cooperatives, members have equal voting rights (one member, one vote); cooperatives at other levels are organized in a democratic manner.

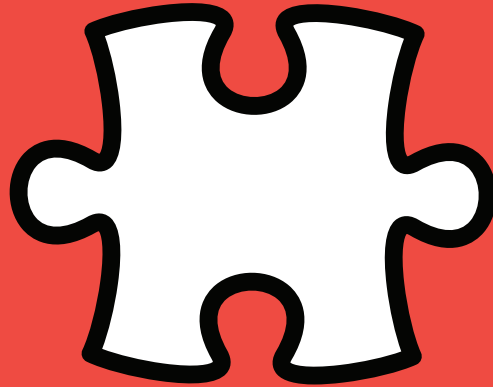
# 3



## MEMBERS' ECONOMIC PARTICIPATION

Members contribute equitably to, and democratically control, the capital of their cooperative. At least part of that capital remains the common property of the cooperative. Members allocate surpluses for any or all of the following purposes: developing the cooperative; setting up reserves; benefiting members in proportion to their transactions with the cooperative; and supporting other activities approved by the membership.

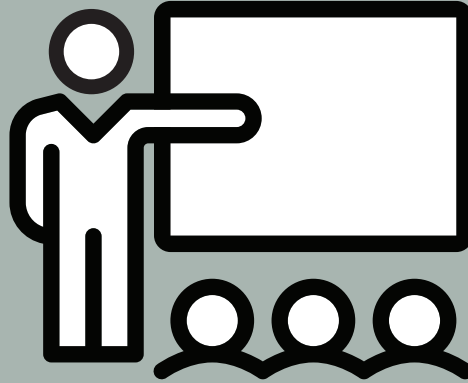
# 4



## **AUTONOMY AND INDEPENDENCE**

Cooperatives are autonomous, self-help organizations controlled by their members. If they enter into agreements with other organizations, including governments, or raise capital from external sources, they do so on terms that ensure democratic control as well as their unique identity.

# 5



## EDUCATION, TRAINING AND INFORMATION

Education and training for members, elected representatives (directors/trustees), CEOs and employees help them effectively contribute to the development of their cooperatives. Communications about the nature and benefits of cooperatives, particularly with the general public and opinion leaders, help boost cooperative understanding.

6



# COOPERATION AMONG COOPERATIVES

By working together through local, national, regional and international structures, cooperatives improve services, bolster local economies and deal more effectively with social and community needs.



# CONCERN FOR COMMUNITY

Cooperatives work for the sustainable development  
of their communities through policies supported  
by the membership.