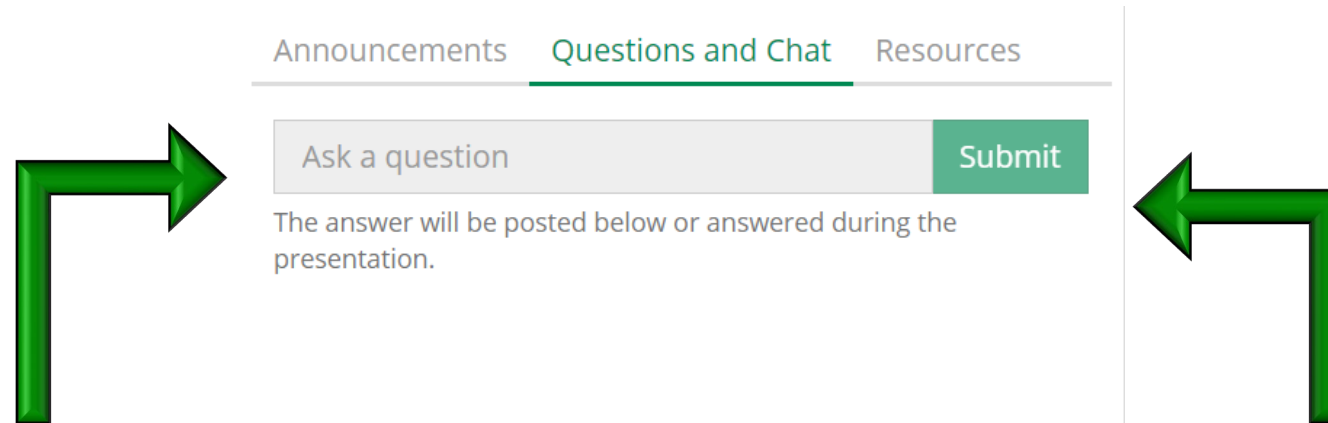


Understanding FEMA's Building Resilient Infrastructure & Communities (BRIC) Program

Contact Technical Support

- For immediate help, call Freestone at (866) 702-3278 or +1 (770) 805-6292.

Submit Your Questions

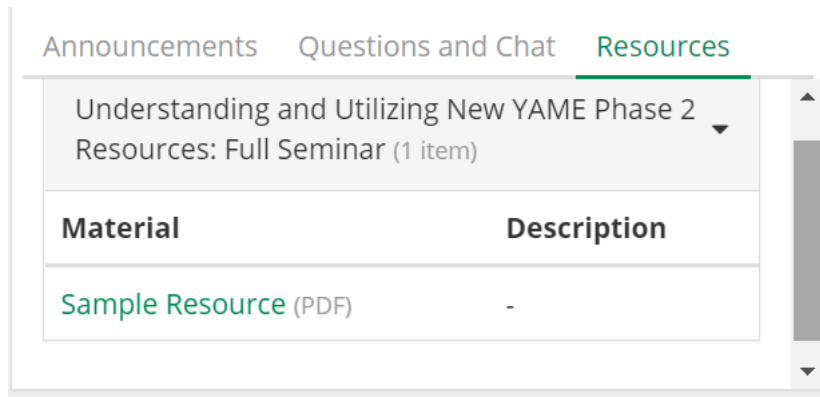


The screenshot shows a web interface with three tabs: 'Announcements', 'Questions and Chat' (which is selected and underlined in green), and 'Resources'. Below the tabs is a form with a text input field labeled 'Ask a question' and a green 'Submit' button. Below the input field, there is a note: 'The answer will be posted below or answered during the presentation.' A large green arrow points from the left towards the 'Ask a question' field, and another large green arrow points from the right towards the 'Submit' button.

Step 1: Type in your question.

Step 2: Click the Submit button.

Download Today's Files



← 1. Click here in the Resources box to open the presentation slides or handout.



2. Click on an icon to print or save the file.

FEMA Mitigation Programs

- Hazard Mitigation Grant Program
 - Eligible as a PNP
- Building Resilient Infrastructures & Communities (BRIC)
 - NOT Eligible as a PNP unless sponsored by an eligible entity



What is BRIC?

All-Hazards Mitigation Plan



- Annual non-disaster grant program that provides federal funds for mitigation activities that address risks and vulnerabilities to natural hazards
- Eligible Applicants – States, federally recognized Tribes, & territories with major disaster declarations in the past 7 years
 - Must have FEMA-approved HM Plan at time of application & award

BRIC Priorities

- **Incentivize** natural hazard risk reduction activities that mitigate risk to public infrastructure
- **Prioritize** benefits to disadvantaged communities
- **Mitigate** risk to one or more community lifelines
- **Incorporate** nature-based solutions
- **Enhance** climate resilience and adaptation
- **Increase** funding to activities that facilitate the adoption and enforcement of the latest published editions of building codes

BRIC Guiding Principles

- Support Community Capability & Capacity Building
- Encourage and Enable Innovation
- Promote Partnerships
- **Enable Large Infrastructure Projects**
- Maintain Flexibility
- Provide Consistency

Examples of Possible Co-op Projects

- Underground conversions (note: FEMA loves these)
- Backfeed loops
- Line/pole hardening or strengthening
- Wildfire defensible space
- Relocation/elevation/floodproofing of infrastructure located in a floodplain
- Emergency power for critical co-op systems (i.e., communications, outage management)
- Safe rooms for critical/essential services personnel



BRIC Funding & Uses



Funding Mechanisms

State & Territory Allocation

Tribal Set-Aside

Project Competition



Uses of Assistance

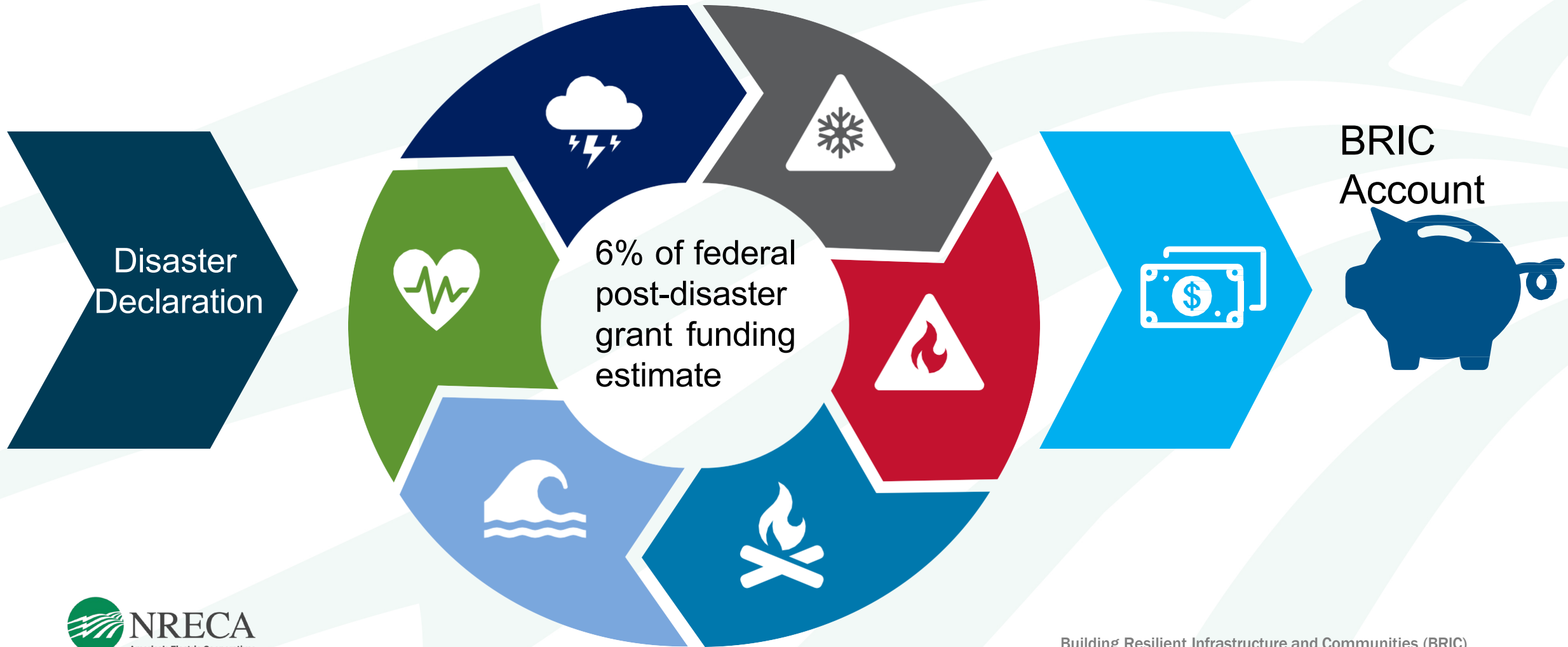
Technical Assistance

Capability & Capacity Building (C&CB)

Mitigation Projects

Management Costs

BRIC Funding



BRIC Funding Caps (FY-21)

State & Territory Allocation (\$56M)

- \$1m each – up to \$500k may be used for planning and planning-related activities per applicant

Tribal Set-Aside (\$25M)

- Combined costs of applicant's capability and capacity building must not exceed \$1m

National Project Competition (\$919+M)

- \$50m per subapplication
- Unlimited number of subapplications by an applicant

BRIC Cost Share

75% federal / 25% non-federal

- Economically disadvantaged rural communities eligible for an increase up to 90% federal / 10% non-federal

Required for all subapplications

May consist of cash, donated or third-party-in-kind-services, materials, or any combination thereof

100% federal funding for management costs

BRIC Application & Deadlines

* Dates for Fiscal Year 2022 cycle are anticipated to be similar to FY21

- Application Opening: Sept 30, 2021
 - Submitted using FEMA Grants Outcome (FEMA GO)
- Deadline: Jan 28, 2022 (3pm EST)
 - States often have a deadline to submit to them in advance of this date, usually at least 30-45 days in advance
- Pre-award Selection Notice – early Summer 2022
- Period of Performance
 - State: Date of Recipient's federal award
 - End: 36 months from state
 - Can submit request for longer POP in subapplication



Uses of Assistance – Technical Assistance

- Improve resiliency to natural hazards
- Ensures stakeholders are capable of building and sustaining successful mitigation programs
- Submitting high-quality applications
- Implement new and innovating projects that reduce risk from wide range of hazards

Uses of Assistance – C&CB



Submitted under State/Territory & Tribal Set-Aside



Activities that enhance knowledge, skills, and expertise of current workforce – expand or improve admin of mitigation assistance



4 types of activities:

- Building Codes
- Partnerships
- Project Scoping
- Mitigation Planning & Planning-Related Activities

Uses of Assistance – Management Costs

- Submitted under State/Territory, Tribal Set-Aside, and National Competition
- Financial assistance to reimburse recipient & subrecipient for eligible and reasonable indirect costs, direct admin costs, and other admin expenses associated with a specific mitigation project or C&CB activity
- Subapplicants may submit up to 5% of the total budget for that subapplication
- Applicants may submit up to 10% of the application budget
 - To administer and manage award and subaward activities



Blue Lake Rancheria Tribe Microgrid

Elements of Good Mitigation Projects

Risk Reduction

Grant Implementation Approach

Innovation in Project Planning and Implementation

Populations Impacted

Partnerships and Outreach

Future Conditions

Infrastructure and Community Lifelines

FEMA Community Lifelines

- Safety & Security
- Food, Water, Shelter
- Health & Medical
- Energy (Power & Fuel)
- Communications
- Transportation
- Hazardous Materials

Eligible Project Scoping Activities

- Engineering design and feasibility studies for larger or complex projects
- Hydrologic & Hydraulic (H&H) studies
- Obtain staff or resources to develop cost-share strategy and identify potential match funding
- Evaluate facilities or areas to determine appropriate mitigation actions
- Collect data for BCA, EHP compliance, & other program requirements
- Evaluation of potential solutions (i.e. alternative analysis)
- Scoping across a wide variety of programs to incorporate sustainability, resilience, and renewable building concepts

Eligible Project Type Examples

Acquisition &
Demo/Relocation

Safe Room
Construction

Structure
Elevation

Wind Retrofit

Mitigation
Reconstruction

Infrastructure
Retrofit

Dry
Floodproofing

Soil Stabilization

Generators

Wildfire
Mitigation

Localized and
Non-Localized
Flood Reduction

Post-Disaster
Code
Enforcement

Environmental & Historic Preservation

- HMA programs & grants must comply with all applicable EHP laws
 - There's no such thing as emergency or exigent circumstance waivers for HMA-funded projects
- Time and cost implications for a project – can be extensive
- Require subapplications to consider alternatives and possibly modify a desired project
- Compliance with law, regulations, and EOs including, but not limited to: NEPA, Endangered Species Act, EO 11988 (Floodplain Management), EO 11990 (Protection of Wetlands) & EO 12898 (Environmental Justice)



Benefit Cost Analysis (BCA)

Eligibility
Requirement of a
BCR of 1.01 or above

Quantifies the
benefits of a project
compared to the
costs ($B / C = BCR$)

FEMA has “pre-
calculated benefits”
for some project
types

BCA is built into the
FEMA BCA software

FEMA has a BCA
Help-Desk and Online
Toolkit for assistance
& questions

National Technical Review

- Once the Region deems project eligible, it moves to NTR
- Score projects based on the following criteria:

Infrastructure Project	20 pts
Mitigating Risk to 1 or more Lifelines	15 pts
Incorporates nature-based solutions	10 pts
Applicant has BC adoption requirements	10 pts
Subapplicant has BCEGS Rating of 1 to 5	20 pts
App generated from previous AA / PS	10 pts
Non-fed cost share of at least 30%	5 pts
Economically Disadvantaged Rural Comm.	15 pts

National Review Panel – Qualitative Review

- Qualitative criteria are narrative submissions to fully explain strengths of proposed project, with graded scales of the following:

Risk Reduction / Resiliency Effectiveness	Detail how project reduces risk & increases resiliency	35 pts
Climate Change & Future Conditions	Describe how responsive to effects of future conditions	20 pts
Implementation Measures	How costs & schedule will be managed & implemented	15 pts
Population Impacted	Demonstrate community wide benefits, pop. Impacted	25 pts
Outreach Activities	Describe outreach strategy	5 pts
Leveraging Partnerships	Incorporates partnerships to meet community needs	15 pts

FY20 Selections

- Building Resilient Infrastructure and Communities FY 2020 Subapplication Status | FEMA.gov
- **Total FY 2020 BRIC program funding: \$500 million**
- **Selected FY 2020 projects: Over \$377 million**

PRINCEVILLE, NORTH CAROLINA: Town of Princeville Relocation Project – \$10.97 Million

- Benefits: Alleviates repetitive flood loss to critical lifeline utilities and emergency support services
- the oldest community chartered by African Americans in the U.S..
- Located in the 100-year floodplain of the Tar River.
- Project will mitigate repetitive loss of infrastructure by relocating critical lifeline utilities, emergency support services, and 54 units of affordable housing outside of the Special Flood Hazard Area.
- This project will also create over five acres of green open space in perpetuity - making this a nature-based solution that utilizes vegetation and permeable soils to assist detention basins to better hold stormwater runoff.



WASHINGTON, D.C.: Saint Elizabeth's Hospital Campus & D.C. Emergency Communications Microgrid Project - \$19.95 Million

- Benefits: Safeguards access to health care and emergency services during severe storms and disasters
- This project will construct a microgrid at the Saint Elizabeth's Hospital Campus to provide resilient power to the Unified Communications Center—other essential loads on the campus.
- The microgrid will provide a redundant and resilient power source and reliable access to health care and emergency services for D.C. residents, including disadvantaged populations.



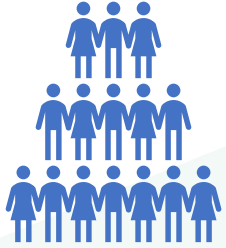
Timeline Management

- All elements in the SOW must be reflected in the schedule
- POP = 36 months (can request more time for large projects)
- Often looked over items:
 - Issuance of agreement
 - Procurement
 - EHP / NEPA Compliance Review
 - Seasonal impacts
 - Project Closeout
- Extensions are not guaranteed and will add additional time to the project's implementation timeline

Sample Timeline

Task Name	Start Month	Duration	Description
Contract Award	1	2 m	Award and execution of grant agreement
Procurement of Professional Services	2	3 m	Procurement of Engineer/Architect Services Professional Services, & Grant Administration / Environmental Services Provider
Contract Award	4	1 m	Selection of vendors and contract execution
Engineering Design	4	6 m	Initial surveys, H&H, and design
Environmental Review & Contract Award	10	1 m	Broad environment review of all required environmental laws. Select contractor and execution of contract.
Construction	12	12 m	Construction NTP and Begin of Construction based on Scope.
Construction Completion	24	10 m	Final inspections and final activities
Project Closeout	33	3 m	Final activities and project closeout
Start: 4/1/22	End: 3/31/25	36 m	

How to be Successful



What is SHMO? - Who is your SHMO or Recovery Manager?



Leverage partnerships get additional points - support at local & state level is crucial - meet, establish relationship with



Attend local meetings regarding mitigation efforts



Share own mitigation efforts and plans going forward



Provide meaningful data to eligible entity how a project is mutually beneficial



Consider participating in HM Plan update

Questions?

Kelly George, CFM

Senior Hazard Mitigation Manager

DCMC Partners

kgeorge@dcmcpartners.com



Looking for **Co-op Focused Training ONLINE?**

NRECA's online learning portfolio covers a wide range of co-op specific topics, employs a variety of interactive learning techniques and are available in a variety of formats.

Visit **cooperative.com/onlinelearning** to view all we have to offer—ONLINE.